



# The development of the Greek Climate Change Adaptation (GCCA) Hub and the National Geoportal for the implementation of national adaptation policies



D. Konsta<sup>(1)</sup>, G. Panagopoulou<sup>(1)</sup>, I. Kapsomenakis<sup>(2)</sup>, G. Kitsara<sup>(3)</sup>, G. Lemesios<sup>(3)</sup>, A. Karali<sup>(3)</sup>, K. Metheniti<sup>(1)</sup>, E. Grigoriadou<sup>(1)</sup>, S. Dramaloti<sup>(1)</sup>, E. Karali<sup>(4)</sup>, A. Voudouri<sup>(1)</sup>, M. P. Papadopoulou<sup>(1)</sup>, C. Giannakopoulos<sup>(3)</sup>, S. Gazerian<sup>(2)</sup>, A. Poupkou<sup>(2)</sup>, S. Solomos<sup>(2)</sup>, P. Kalabokas<sup>(2)</sup>, C. Zerefos<sup>(2)</sup>



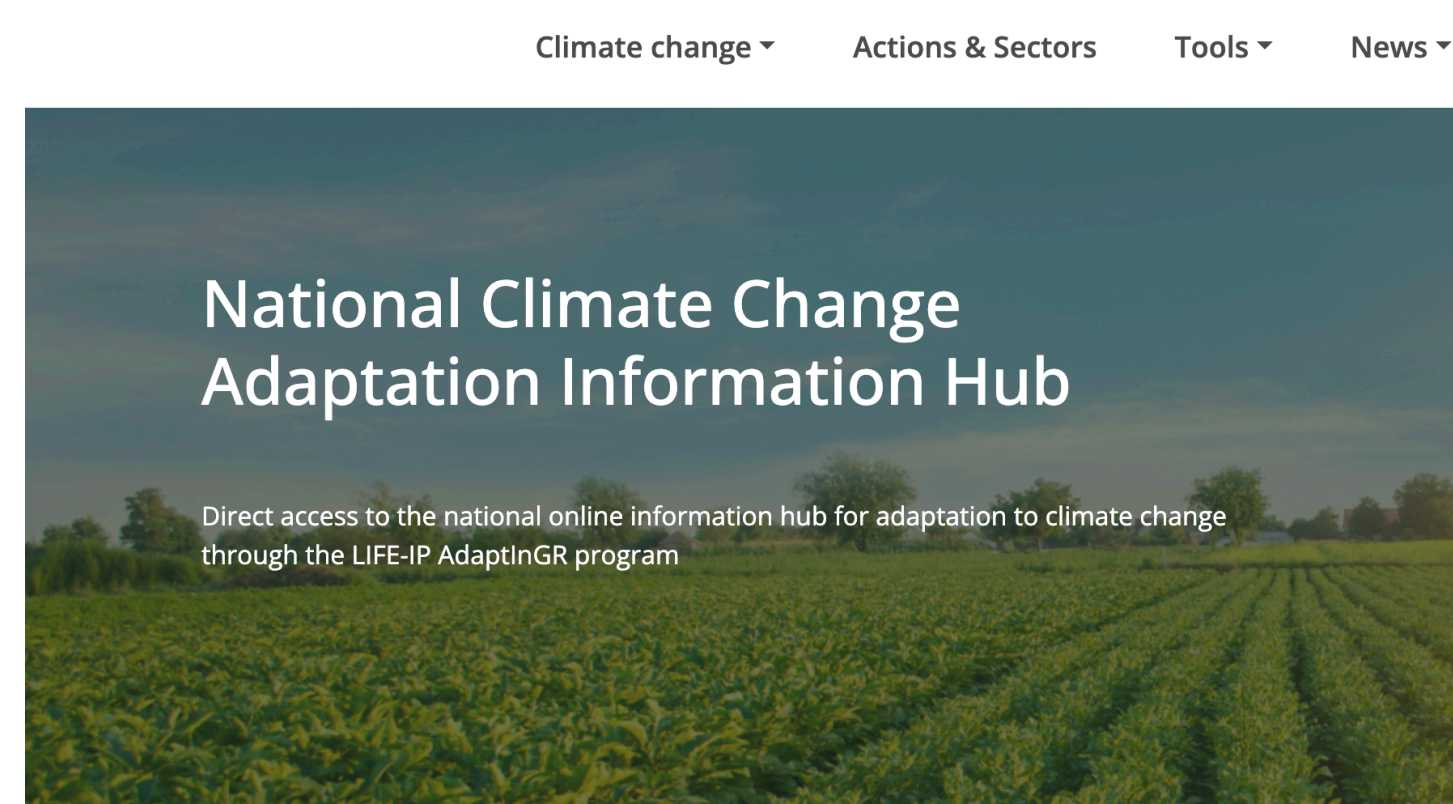
<sup>(1)</sup> Natural Environment and Climate Change Agency (NECCA), Greece | <sup>(2)</sup> Academy of Athens (AA), Greece | <sup>(3)</sup> National Observatory of Athens (NOA), Greece | <sup>(4)</sup> Ministry of Environment and Energy (MEEN), Greece

## Abstract

Greece's National Adaptation Strategy (NAS), adopted in 2016, aims at strengthening the country's resilience to climate change and its impacts. Among its five key objectives, the Greek NAS aims at supporting better-informed short-term and long-term decision-making process with regard to adaptation (Objective 1) and enhancing the adaptive capacity of the Greek society through raising awareness actions (Objective 5). The Greek Climate Change Adaptation (GCCA) Hub (<https://adaptivgreecehub.gr/>) and the online tool in the Geospatial Information Portal of the Greek Ministry of Environment and Energy ([http://mapsportal.ypen.gr/thema\\_climatechange](http://mapsportal.ypen.gr/thema_climatechange)) - both developed in the framework of the integrated project "LIFE-IP AdaptInGR - play a vital role towards the achievement of the two abovementioned objectives of the NAS.

## Introduction

Greece released the Greek Climate Change Adaptation (GCCA) Hub (available on <https://adaptivgreecehub.gr/>) in September 2022.



The Hub intends to:

- provide tools and resources for assisting decision-makers across the different steps of the adaptation policy cycle,
- raise awareness of adaptation among Greek citizens and climate vulnerable groups,
- promote sharing of good practices among key adaptation stakeholders.

In addition, the produced (at national scale for Greece) future projections of several climate parameters, indices and maps combined with geospatial data, were incorporated also in the National Geoportal Tool of MEEN, a web-GIS tool which provides high quality climate information necessary to assess the climate change signal and impacts across Greece.

## Conclusions

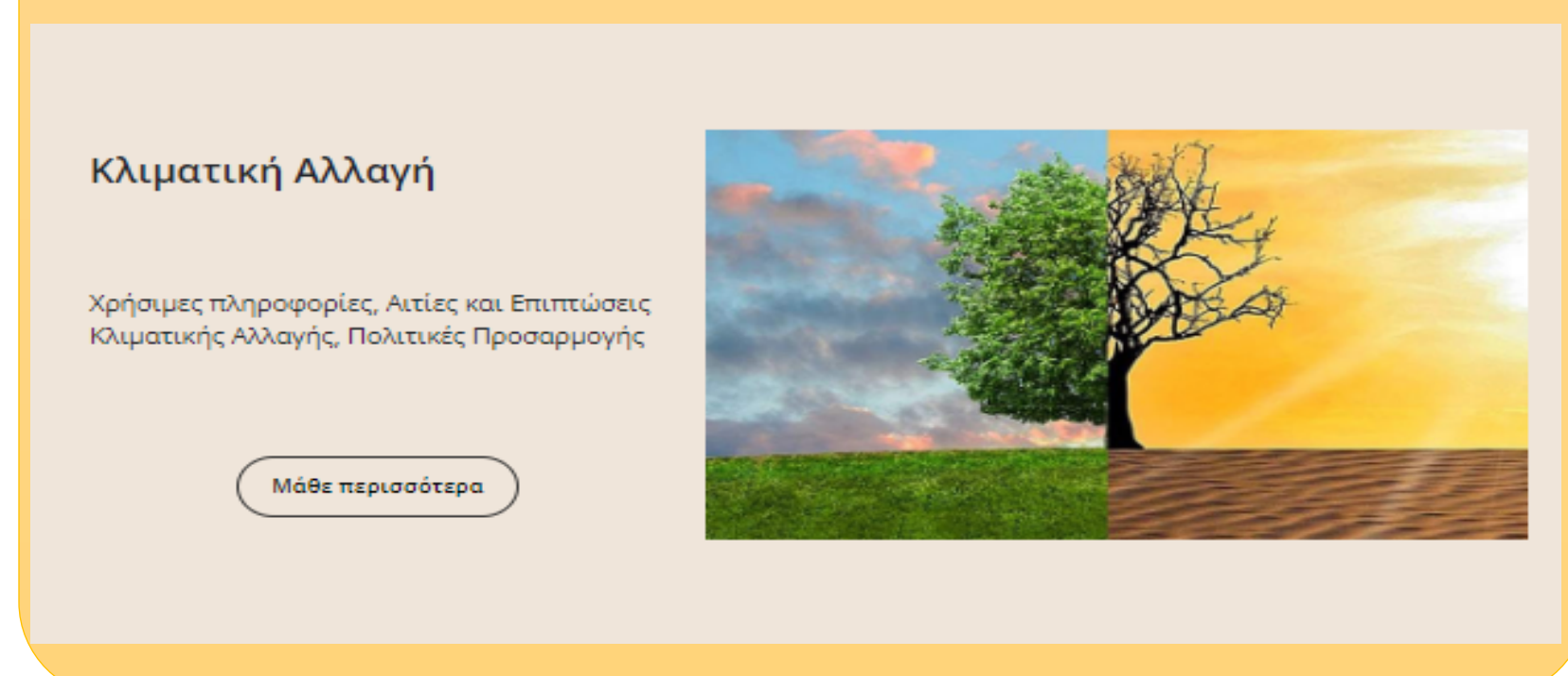
- ⇒ Once fully operational, the GCCA Hub along with the National Geoportal Tool will provide tools and resources that allow decision-makers and other key adaptation stakeholders to assess the impacts of climate change both regionally and locally, and plan appropriate actions and adaptation measures.
- ⇒ The GCCA Hub and National Geoportal are expected:
  - a) to improve the level of public awareness regarding climate change impacts and adaptation actions in Greece, which is currently considered low, especially among professional and other groups vulnerable to climatic hazards
  - b) to support significantly decision-making at the different stages of the adaptation policy cycle (e.g. the design and implementation of policies and actions), in different sectors and administrative levels.

## Content of GCCA HUB

### Climate Change

Information on climate change, climate change adaptation policies and adaptation actions

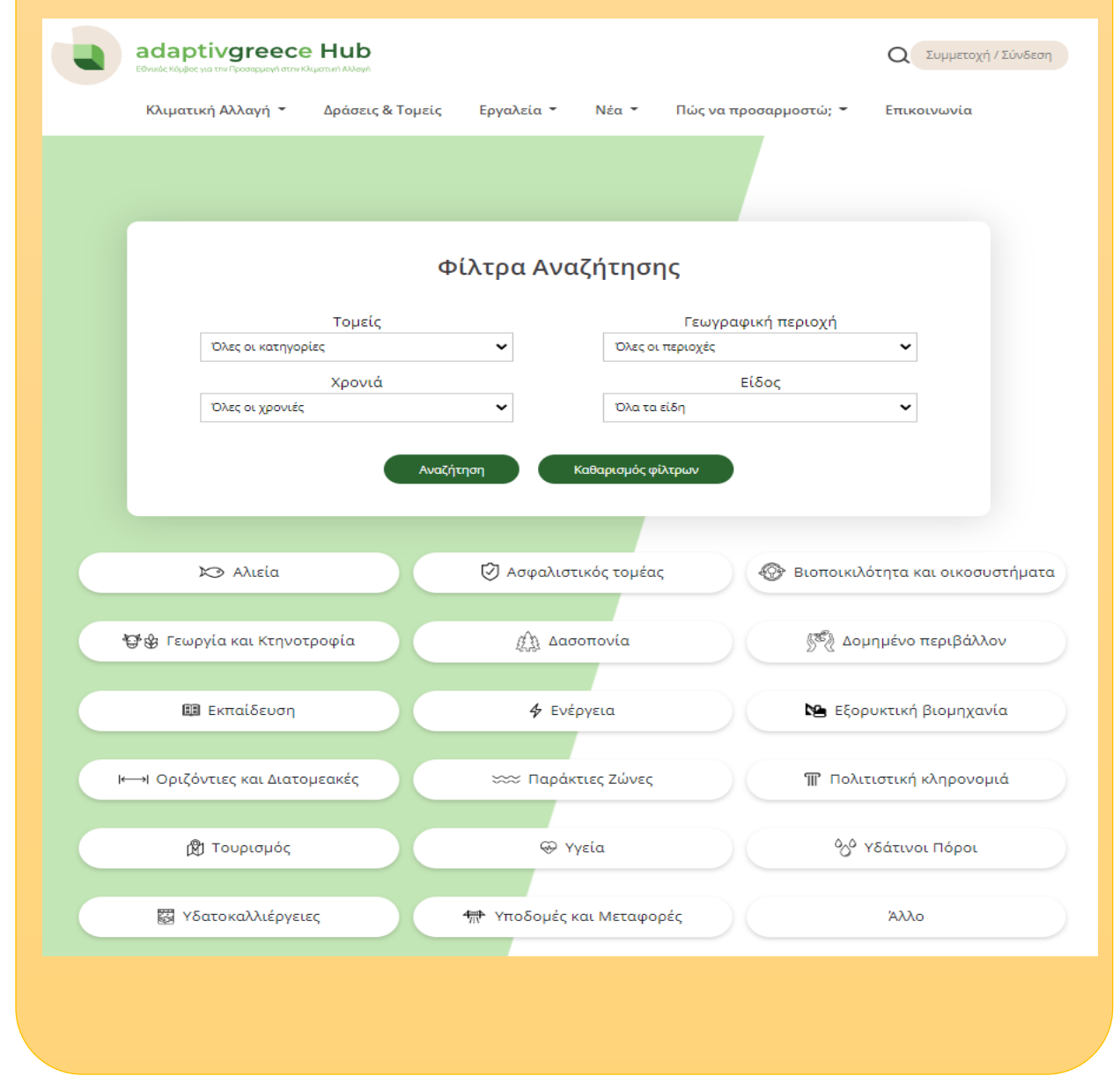
- Climate Change (Causes of CC, Impacts of CC worldwide and in Greece, Projections of Global Climate Change)
- Adaptation and mitigation
- Climate adaptation policy at International, European and national level and relevant legislation
- The LIFE-IP AdaptInGR project



### Actions and Sectors

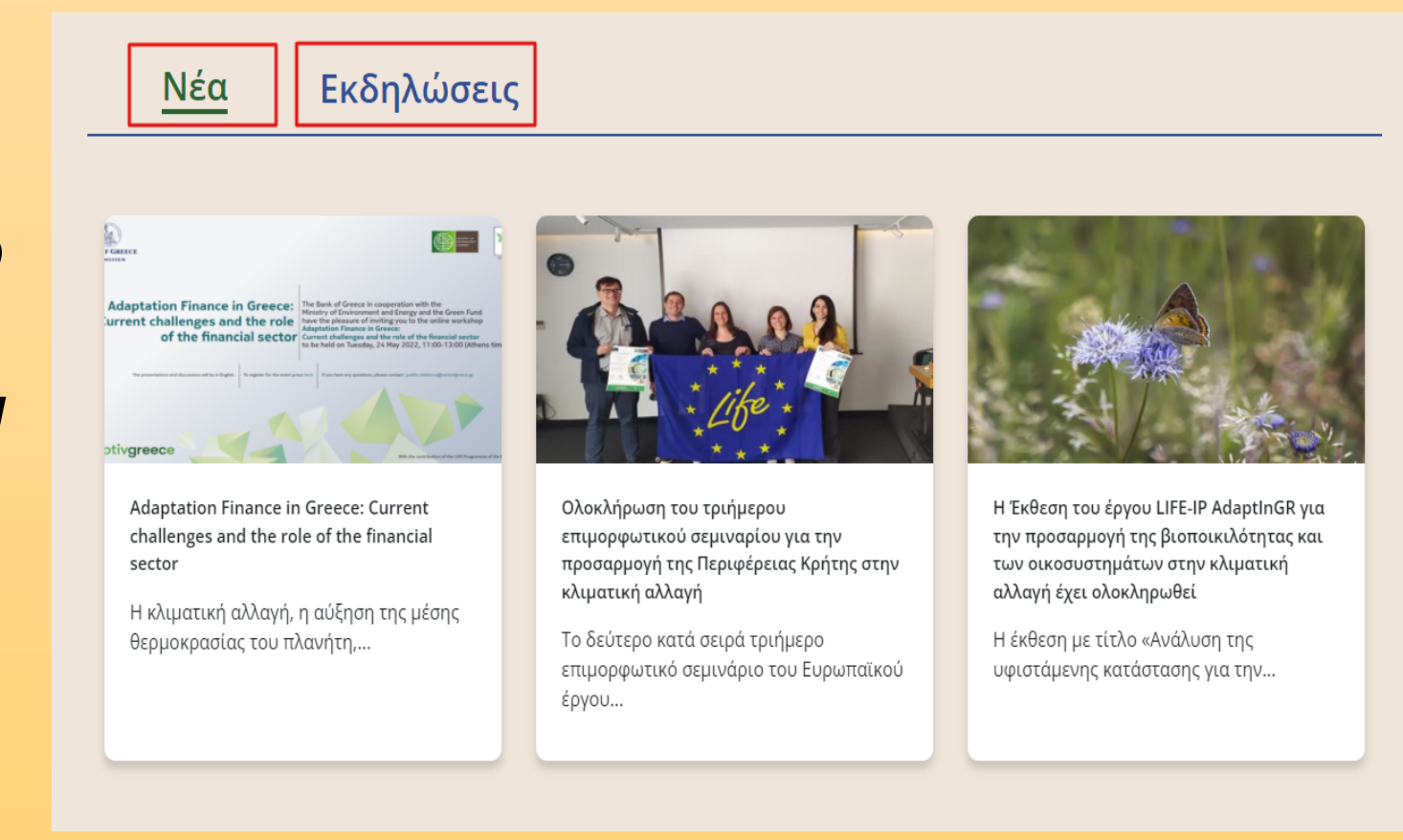
Good practices and adaptation actions in different sectors

- filter per region, sector, year, and type of action
- not completed yet



### News

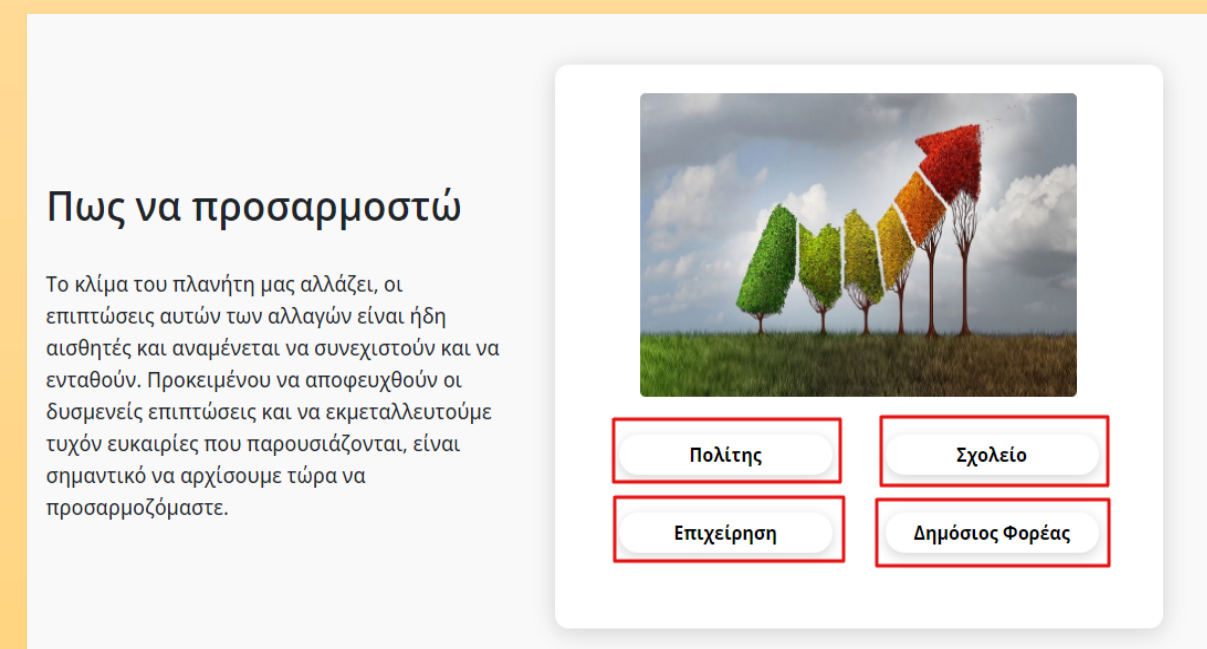
Information related to adaptation news and events



### How to Adapt

Information targeted to different groups of interested parties

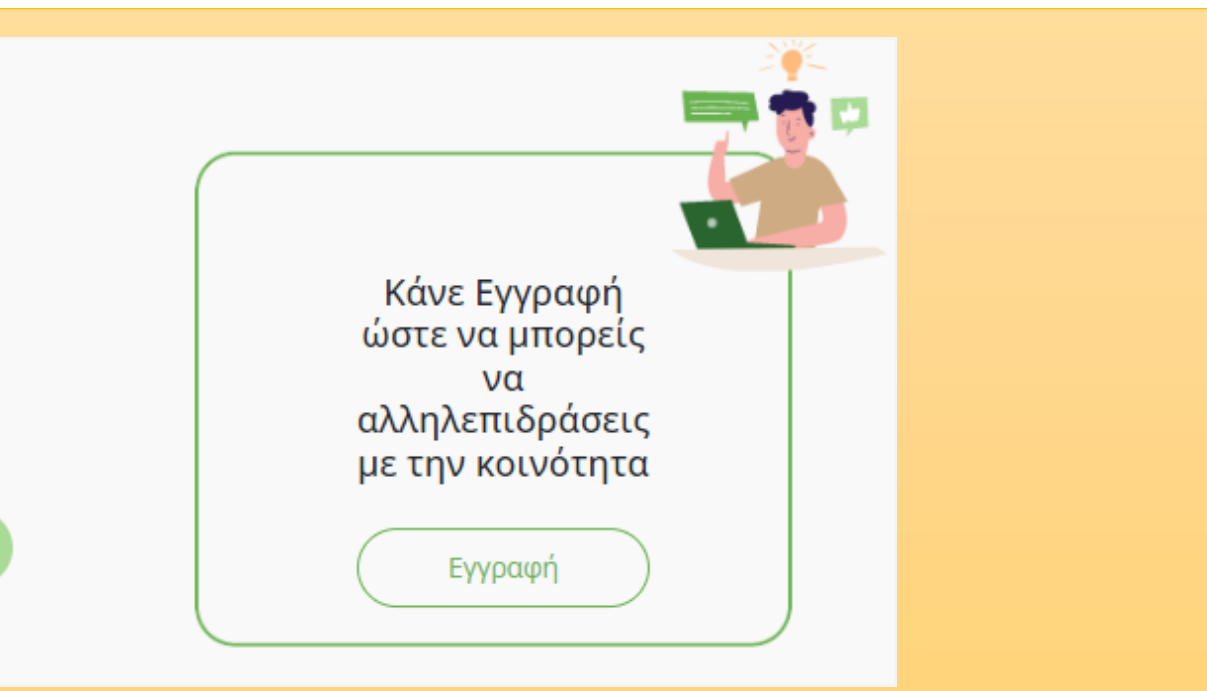
- Citizens
- Education - Schools
- Business/ Private sector
- Public Bodies



### Επισκεφθείτε το Forum!

Βρείτε εδώ την κοινότητα adaptivgreece Hub για να συμμετέχετε σε θεματικές ομάδες εργασίας

- participate in adaptation discussion forums and thematic groups
- propose material to be included in the Hub

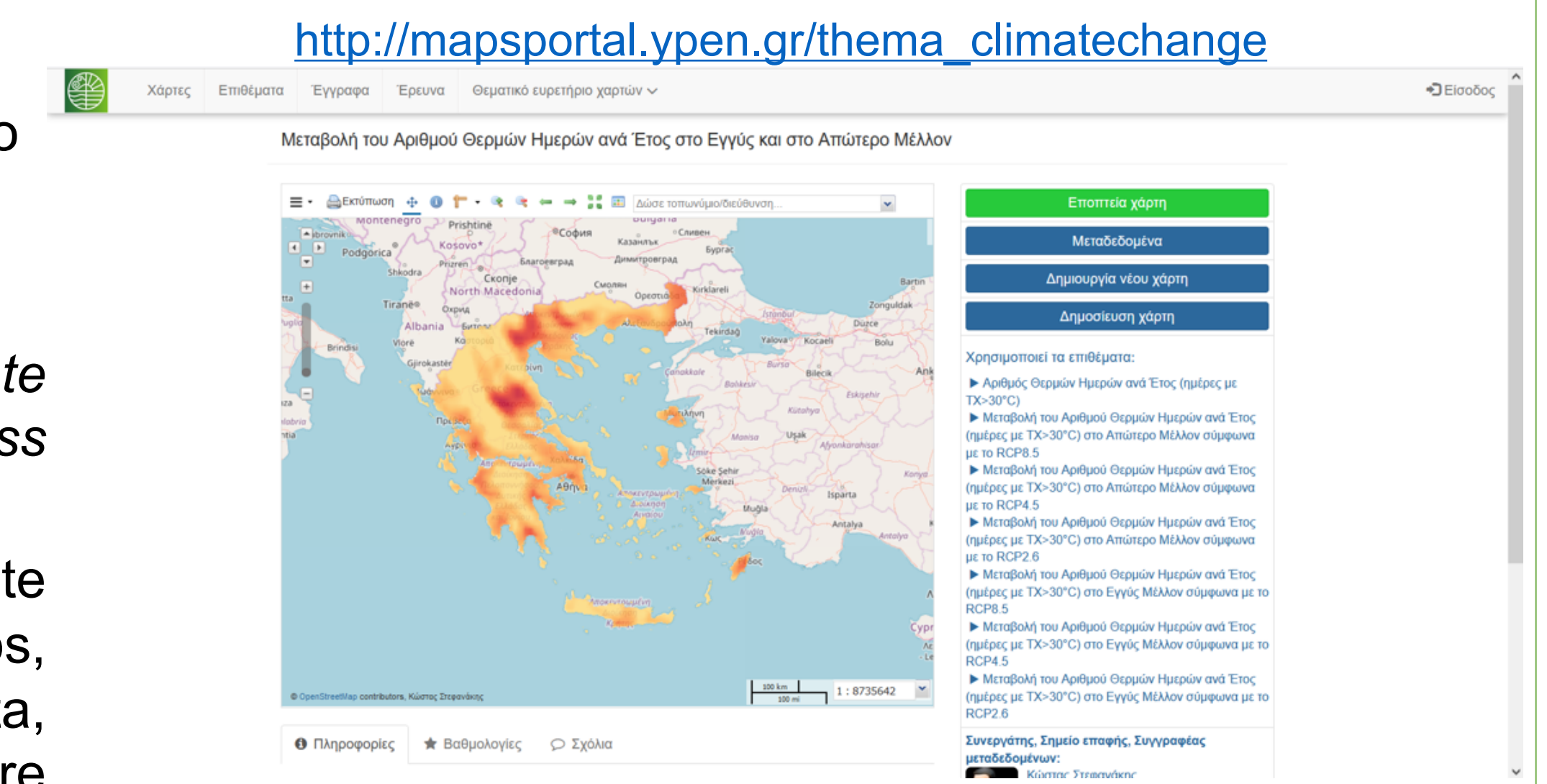


## The GCCA Hub and the National Geoportal Tool

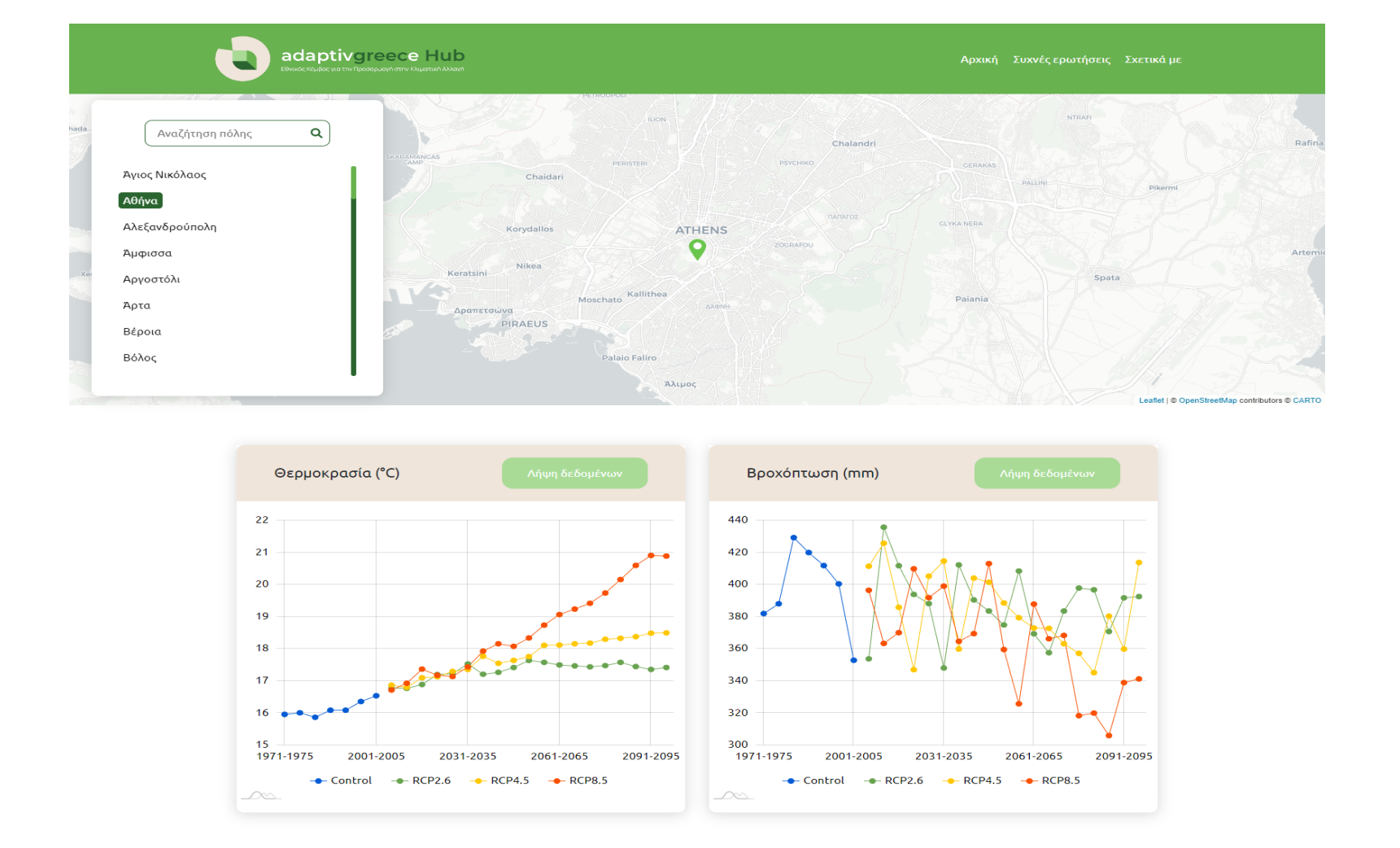
Climate future projections at national scale are presented in two online web-Tools /Platforms

Both tools assess the climate change signal and impacts across Greece. They:

- incorporate the produced climate projections, indices and maps, combined with geospatial data, providing high quality future climate information
- host maps of twenty-two climatic indices, relevant to climate variability and risks, based on the ensemble mean of seven selected regional climate models for two future periods (2031-2060, 2071-2100) under three emission scenarios (RCP2.6, RCP4.5, RCP8.5)



<https://geo.adaptivgreecehub.gr/>



## Next Steps:

- ⇒ The 2<sup>nd</sup> version of the Hub will be released by 2024 (including English version, updated content, updated sitemap, improved climate projections tool)
- ⇒ The final version will be released by the end of 2025

## Acknowledgements

The GCCA Hub and the National Geoportal Tool have been developed by the Natural Environment and Climate Change Agency of Greece (<https://necca.gov.gr/en/home/>) and the Greek Ministry of Environment and Energy (<https://ypen.gov.gr>), respectively, in the framework of the LIFE-IP AdaptInGR project (<https://www.adaptivgreece.gr/el-gr/>) – the most important project for adapting Greece to climate change.